

**SCF**

**CONTAINER  
SOLUTIONS**



**20FT PORTABLE  
FIRST AID ROOM**

# 20ft Portable First Aid Room

A portable medical building or first aid room provides your team with a facility to treat patients in a purpose-built environment that is safe and clean.

## Key Features

- Rockwool insulation and split system reverse cycle air conditioning
- Hot and cold water
- Stainless steel kitchenette
- Hard wearing vinyl floor for easy cleaning and maintenance

## Options

- Configuration options - chairs, desks and treatment tables
- Custom container modification based on your requirements

## Details

SCF's Portable First Aid Rooms are a temporary, purpose-built medical facility which allows for the treatment of patients safely onsite. It has been designed with a range of medical focused features, including a hard-wearing vinyl floor, which is easy to clean and maintain.

All units are built with a strong focus on safety and security, including lockable steel doors, hardwired smoke alarms with battery backup, internal lighting and windows with fly screens and security mesh.

SCF Portable First Aid Rooms are equipped with hot and cold water, sink, stainless steel kitchenette bench, split system reverse cycle air conditioning and lighting. There is also internal power for workstations, powering medical equipment or charging devices.

Our portable medical buildings and our entire portable building range thrives in harsh environments. Built from steel (including steel doors) with high-quality fittings, our units are designed to last so your site runs smoothly. They can also be deployed quickly and safely on short notice.

## Specifications

20ft Portable First Aid Room | AA296-MEDICAL

*Specifications may vary*

### Internal

Length (mm) 5,770  
Width (mm) 2,150  
Height (mm) 2,440

### External

Length (mm) 6,058  
Width (mm) 2,438  
Height (mm) 2,896

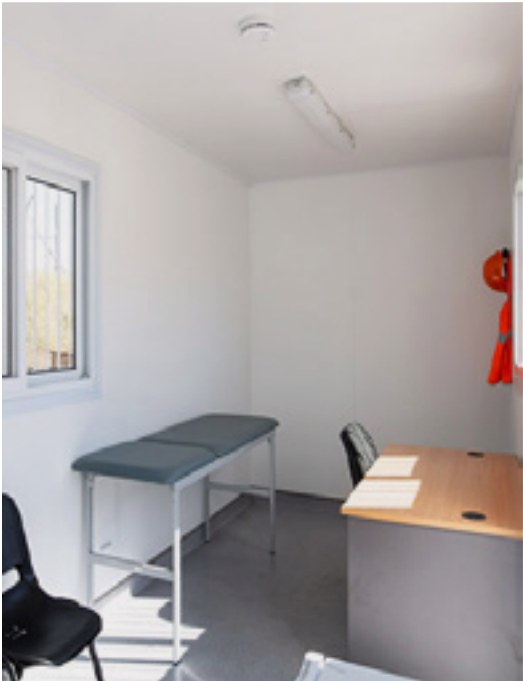
## Weight

Tare (kg) 3,000  
Payload (kg) 7,000  
MGW (kg) 10,000



Top: The 20ft First Aid room can be stacked like all other SCF Site Sheds.

Middle Left: Depending on your requirements, a range of configurations are available.



Middle Right: All First Aid rooms come with air conditioning and a kitchenette.



Below: Treat your team in a suitable First Aid container and reduce downtime on the job.



SCF  
www.scf.com.au  
131 132

